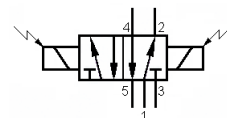
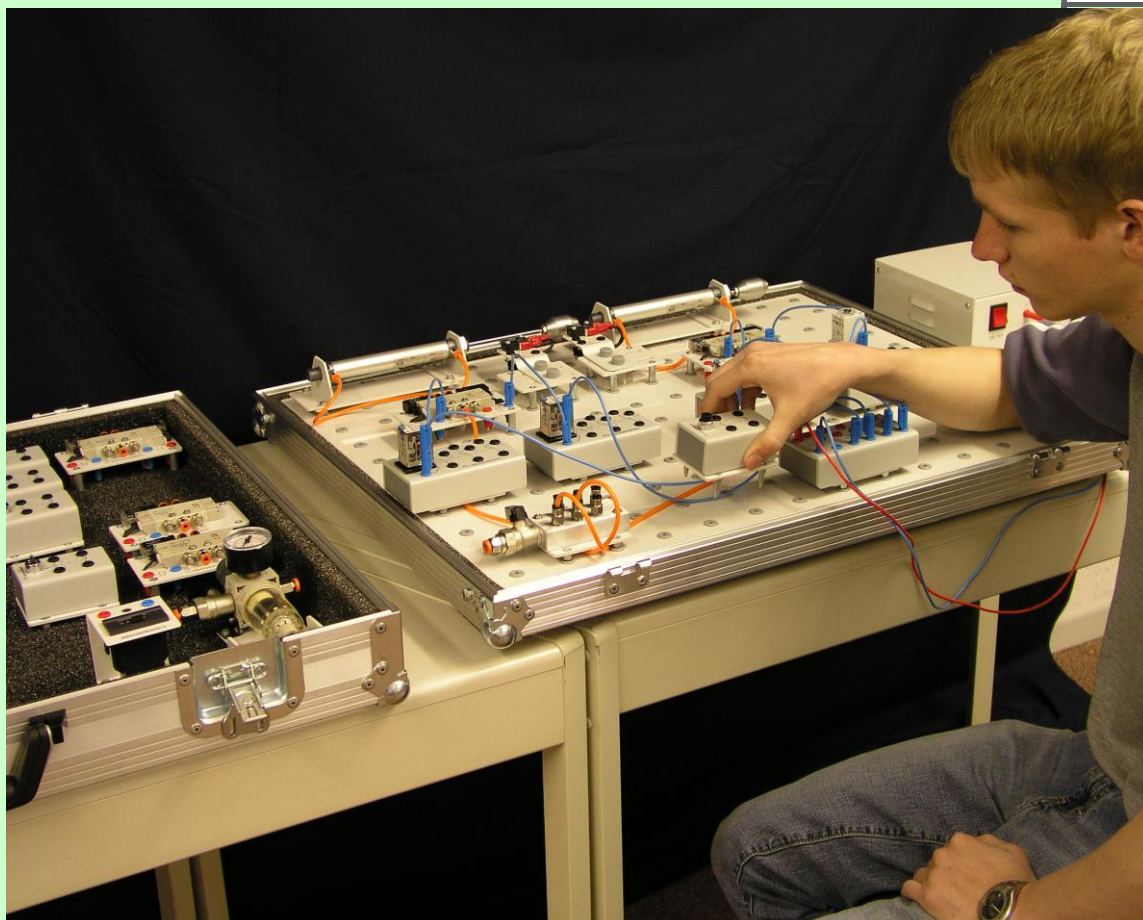


PORTABLE ELECTRO-PNEUMATICS TRAINING SYSTEM



Electro-
pneumatics



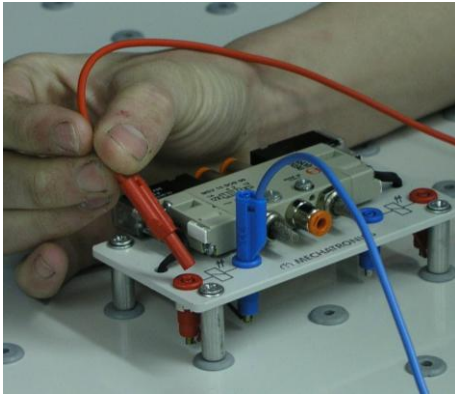
Practical 'Hands ON' training systems for those taking part in
Multi-skilling, Cross-skilling, NVQ or Modern Apprenticeship
Training programmes



MECHATRONICS

Suitable for
EAL
BTEC/Edexcel
City & Guilds
Curricula

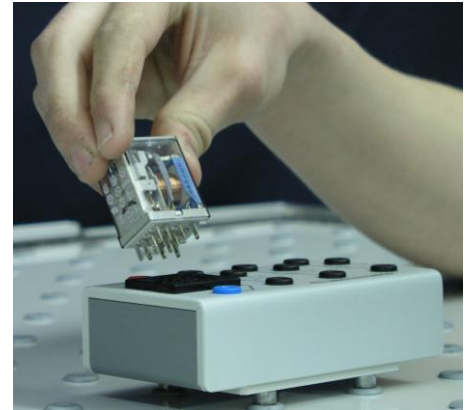
The Portable Electro-pneumatics Training System from **MECHATRONICS** has been specifically developed for those who are providing 'mobile' training and/or those who require to maximise the availability of valuable laboratory or classroom space.



All electrical connections are made via shrouded safety sockets and plugs.

This system can be easily transported from location to location and packed away, when not in use, thereby freeing up valuable space for the teaching of other subjects.

The system is extremely clean, safe and easy to use, utilising high quality push-in pneumatics fittings and electrical connectors throughout.

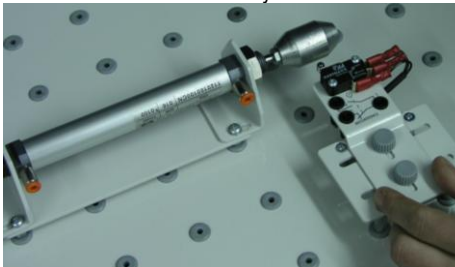


Standard industrial plug-in relays and timer relays

All the components used in the system are genuine industrial items that are widely used in various industries worldwide. The components are quickly and easily mounted on the circuit building panel with a simple push fit, eliminating the requirement for any tools. The complete assembly, test and disassembly of circuits is therefore rapid, easy and efficient, thus maximising the time available when 'putting the theory into practice'.



Limit switches and sensors have both horizontal and vertical adjustment



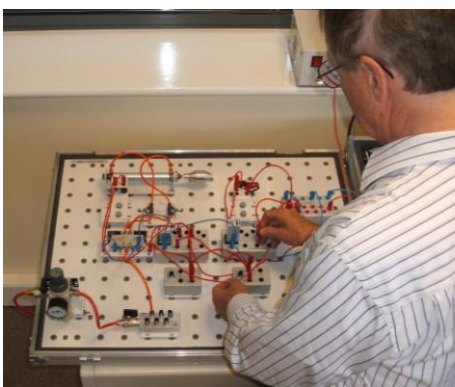
The components available cover a wide range of actuators, directional, pressure and flow control, as well as sensors in pneumatics and electro-pneumatics, more extensive circuits and controls can be constructed and tested by connecting to the P.L.C. training systems from **MECHATRONICS**.

All components, along with a circuit building panel are contained in a lockable, heavy-duty, aluminium framed storage / transit case.



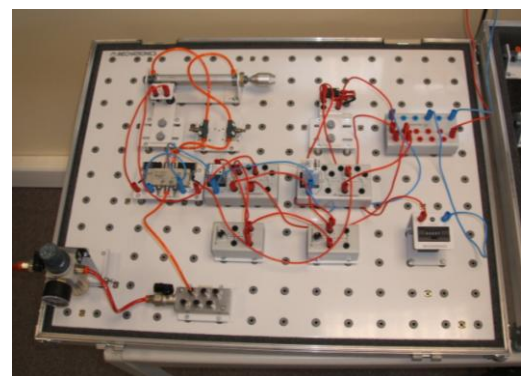
Set of Components – Electro-pneumatics, level 1 in storage/transit case (24V dc power supply not shown but included in set)

The **MECHATRONICS** Portable Electro-pneumatics Training System is ideally suited to achieve the practical requirements of courses such as City & Guilds, BTEC, SEMTA, amongst others, at minimal capital outlay.

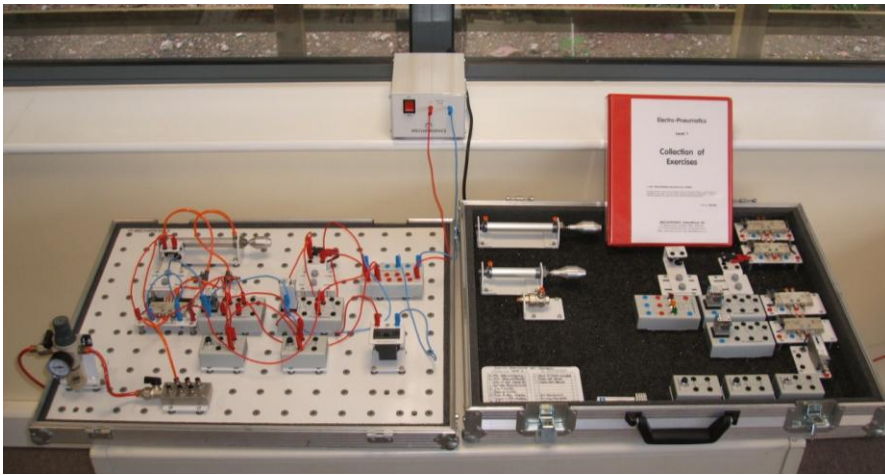


Circuits can be easily constructed and tested

Complete packages of Courseware and Teachware, including purpose designed practical exercises are also included to fully support the training hardware. A 'total system' can therefore be supplied that is 'ready to use' without the need for precious development time.



Sample circuit



Support Materials available:-

- Exercises/Solutions with Question/Answer Papers:
 - Electro-pneumatics
 - P. L. C.
- OHP Transparencies
- Magnetic Symbols
- Manuals & Textbooks

Lid and base of case laid side by side, equipment picked from case, circuit constructed and tested, then equipment returned to case for storage and/or transportation.

Features:

- Fully portable systems, that can be easily transported for on-site training
- Allows classrooms to be 'multi-tasked', due to being compact and easy to store when not in use
- Easy, quick and clean in use
- Quick, clean and safe push-in pneumatic fittings and electrical connectors
- Choice of electro-pneumatics and P.L.C.
- Extremely wide range of components available
- Full range of support materials

Advantages:

- Low capital cost
- Genuine industrial components
- Eliminates need for tools
- Simple expansion into P.L.C. systems
- Very compact and portable
- Minimum space required
- Supplied complete with 'Collection of Exercises/Solutions with Question/Answer papers'

Benefits:

- Improved quality of training
- Improved appearance
- Create professional image
- Can cater for a wider client base, due to portability of the training system/s
- No tools required
- Cost effective system
- Extensive number of exercises possible
- Supplied ready for use (no precious development time required)

Safety:

- All electrical connections made via shrouded safety sockets and plugs
- 24V d.c. control voltage used for electro-pneumatics and P.L.C. systems

TECHNICAL SPECIFICATION

Electrical Supply: 24V d.c. control voltage used throughout for added safety
Pneumatics: Maximum system pressure – 10 bar

Note:

Requires a clean, dry, non-lubricated, air supply for efficient operation, we can supply a range of suitable compressors if necessary.

OTHER PRODUCTS

MECHATRONICS International Ltd are specialist manufacturers of an extensive range of training equipment which includes the following:-

Training Hardware:-

In addition to the Portable Electro-pneumatics Training System we are also manufacturers of training systems in all of the following subject areas:-

Pneumatics (portable & laboratory trolley based systems)

Electro-pneumatics (laboratory trolley based systems)

Hydraulics

Electro-hydraulics

Proportional hydraulics

Programmable Logic Control (P.L.C.'s)

Mechanical Transmissions

Industrial Handling

CIM / FMS

These systems are modular and available in a wide variety of formats, they are compatible with each other and therefore may be combined together or used individually. All the required hardware from a single component through to complete, very extensive 'Turnkey Systems' can be supplied.

Teachware & Courseware:-

To support the training systems hardware we have developed a full range of Teachware suitable for use by Instructors, Lecturers, Tutors and Teachers.

Courseware suitable for use by students is available in the form of 'Industry Related' practical exercises, supported by question and answer papers, relevant to the exercises, thereby offering a complete structured assessment system. This material is covered by copyright but is supplied with a licence, which allows copying, by the purchaser for training and educational purposes.



MECHATRONICS International Ltd

Mechatronics House, Unit 9, Lancaster Park, Newborough Road, Needwood,
Burton-on-Trent, Staffordshire, DE13 9PD, England

Tel: +44 (0) 1283-575444
Web: www.mech.co.uk

Fax: +44 (0) 1283-575766
email: admin@mech.co.uk

E. & O. E. As the company operates a system of continually striving to improve its products and services we reserve the right to change, amend or modify the product/s without prior notification.